

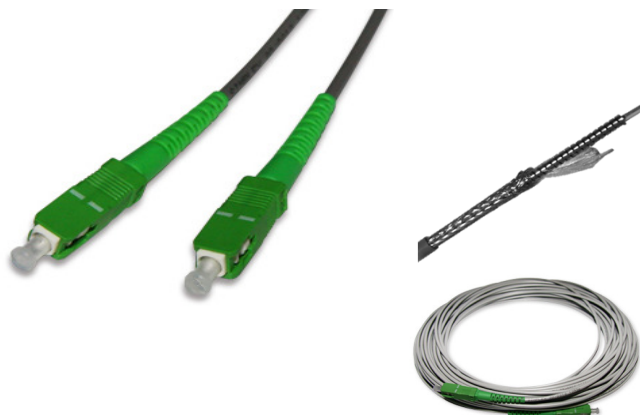
**SC/SC duplex fiber patch cords - OD 3mm/ TELECOM SERRIES**



Item code	Connector type	Fiber type	Mode	Cable colour	Lenght (m)
SC/SC-DX-1.0	SC/UPC	OS2	SM	Yellow	1,0
SC/SC-DX-2.0	SC/UPC	OS2	SM	Yellow	2,0
SC/SC-DX-5.0	SC/UPC	OS2	SM	Yellow	5,0
SC/SC-DX-10.0	SC/UPC	OS2	SM	Yellow	10,0
SC/SC/A-DX-1.0	SC/APC	OS2	SM	Yellow	1,0
SC/SC/A-DX-2.0	SC/APC	OS2	SM	Yellow	2,0
SC/SC/A-DX-5.0	SC/APC	OS2	SM	Yellow	5,0
SC/SC/A-DX-10.0	SC/APC	OS2	SM	Yellow	10,0
SC/SC-DX/OM3-1.0	SC/UPC	OM3	MM	Aqua	1,0
SC/SC-DX/OM3-2.0	SC/UPC	OM3	MM	Aqua	2,0
SC/SC-DX/OM3-5.0	SC/UPC	OM3	MM	Aqua	5,0
SC/SC-DX/OM3-10.0	SC/UPC	OM3	MM	Aqua	10,0
SC/SC-DXMM-2.0	SC/UPC	OM2	MM	Green	2,0

- Fiber patch cords according to best OS2, OM1, OM2, OM3, OM4 quality, that match professional telecommunication network specification with minimum insertion and return loss
- Each patch cord is approved with individual test report on it
- **If you do not find your required product in list, we can provide special order with any length, fiber type, diameter needed**

**SC/SC simplex ARMORED patch cords/ INDUSTRIAL SERRIES**



Item code	Connector type	Fiber type	Mode	Cable colour	Lenght (m)
SC/SC/R-SX-10.0	SC/UPC	G657.A	SM	Grey	10,0
SC/SC/R-SX-20.0	SC/UPC	G657.A	SM	Grey	20,0
SC/SC/R-SX-40.0	SC/UPC	G657.A	SM	Grey	40,0
SC/SC/AR-SX-10.0	SC/APC	G657.A	SM	Grey	10,0
SC/SC/AR-SX-20.0	SC/APC	G657.A	SM	Grey	20,0
SC/SC/AR-SX-40.0	SC/APC	G657.A	SM	Grey	40,0

- Industrial quality
- Very flexible - small bending radius, G657.A fiber
- **DOUBLE ARMORED - Stainless steel spiral coil with steel braiding for high mechanical resistance**
- Non-crushable, shock proof, extra resistant
- Available also other length and other fiber types on special orders

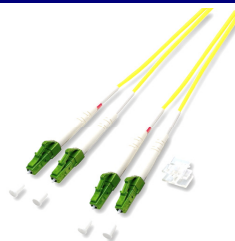
**SC/LC duplex fiber patch cords - OD 3mm/ TELECOM SERRIES**



Item code	Connector type	Fiber type	Mode	Cable colour	Lenght (m)
SC/LC-DX-1.0	UPC	OS2	SM	Yellow	1,0
SC/LC-DX-2.0	UPC	OS2	SM	Yellow	2,0
SC/LC-DX-5.0	UPC	OS2	SM	Yellow	5,0
SC/LC-DX/OM3-1.0	UPC	OM3	MM	Aqua	1,0
SC/LC-DX/OM3-2.0	UPC	OM3	MM	Aqua	2,0
SC/LC-DX/OM3-5.0	UPC	OM3	MM	Aqua	5,0
SC/LC-DXMM-2.0	UPC	OM2	MM	Green	2,0

- Other length and specification available on special order
- Approved for Telecom quality standards

**LC/LC duplex fiber patch cords - OD 3mm/ TELECOM SERRIES**



Item code	Connector type	Fiber type	Mode	Cable colour	Lenght (m)
LC/LC-DX-1.0	LC/UPC	OS2	SM	Yellow	1,0
LC/LC-DX-2.0	LC/UPC	OS2	SM	Yellow	2,0
LC/LC-DX-5.0	LC/UPC	OS2	SM	Yellow	5,0
LC/LC-DX/OM3-1.0	LC/UPC	OM3	MM	Aqua	1,0
LC/LC-DX/OM3-2.0	LC/UPC	OM3	MM	Aqua	2,0
LC/LC-DX/OM3-5.0	LC/UPC	OM3	MM	Aqua	5,0
LC/LC-DXMM-2.0	LC/UPC	OM2	MM	Green	2,0

- Also available OM4. Other specification available on request
- Approved for Telecom quality standards

**90 degree angled LC duplex fiber patch cords/ TELECOM SERRIES**



Item code	Connector type	Fiber type	Mode	Cable colour	Lenght (m)
LC/LC/90-DX-1.0	LC/LC	OS2	SM	Yellow	1,0
LC/LC/90-DX-2.0	LC/LC	OS2	SM	Yellow	2,0
LC/LC/90-DX-5.0	LC/LC	OS2	SM	Yellow	5,0
LC/LC/90-DX/OM3-1.0	LC/LC	OM3	MM	Aqua	1,0
LC/LC/90-DX/OM3-2.0	LC/LC	OM3	MM	Aqua	2,0
LC/LC/90-DX/OM3-5.0	LC/LC	OM3	MM	Aqua	5,0
LC/SC/90-DX-1.0	LC/SC	OS2	SM	Yellow	1,0
LC/SC/90-DX-2.0	LC/SC	OS2	SM	Yellow	2,0
LC/SC/90-DX-5.0	LC/SC	OS2	SM	Yellow	5,0
LC/SC/90-DX/OM3-1.0	LC/SC	OM3	MM	Aqua	1,0
LC/SC/90-DX/OM3-2.0	LC/SC	OM3	MM	Aqua	2,0
LC/SC/90-DX/OM3-5.0	LC/SC	OM3	MM	Aqua	5,0

- 90 degree angled LC connectors
- Available also SIMPLEX solution on request

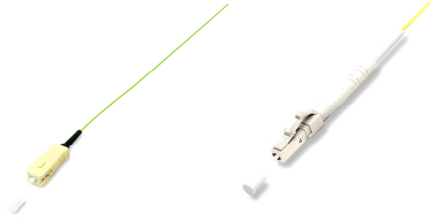
**FC/FC duplex fiber patch cords - OD 3mm/ CATV SERRIES**



Item code	Connector type	Fiber type	Mode	Cable colour	Lenght (m)
FC/FC-DX-1.0	FC/UPC	OS2	SM	Yellow	1,0
FC/FC-DX-2.0	FC/UPC	OS2	SM	Yellow	2,0
FC/FC-DX-5.0	FC/UPC	OS2	SM	Yellow	5,0
FC/FC/A-DX-1.0	FC/APC	OS2	SM	Yellow	1,0
FC/FC/A-DX-2.0	FC/APC	OS2	SM	Yellow	2,0
FC/FC/A-DX-5.0	FC/APC	OS2	SM	Yellow	5,0
FC/FC-DX/OM3-1.0	FC/UPC	OM3	MM	Aqua	1,0
FC/FC-DX/OM3-2.0	FC/UPC	OM3	MM	Aqua	2,0
FC/FC-DX/OM3-5.0	FC/UPC	OM3	MM	Aqua	5,0

- Appropriate for CATV and television systems
- Available UPC and APC type in SIMPLEX solution

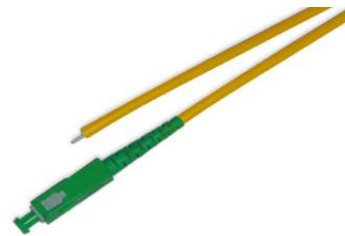
**Fiber pigtaills - OD 0.9mm/ TELECOM SERRIES**



Item code	Connector type	Fiber type	Mode	Cable colour	Lenght (m)
SC-P-1.0	SC/UPC	OS2	SM	Yellow	1,0
SC/A-P-1.0	SC/APC	OS2	SM	Yellow	1,0
SC-PMM-1.0	SC/UPC	OM2	MM	Green	1,0
SC-P/OM3-1.0	SC/UPC	OM3	MM	Aqua	1,0
LC-P-1.0	LC/UPC	OS2	SM	Yellow	1,0
LC-PMM-1.0	LC/UPC	OM2	MM	Green	1,0
LC-P/OM3-1.0	LC/UPC	OM3	MM	Aqua	1,0
FC-P-1.0	FC/UPC	OS2	SM	Yellow	1,0
FC/A-P-1.0	FC/APC	OS2	SM	Yellow	1,0
FC-PMM-1.0	FC/UPC	OM2	MM	Green	1,0
FC-P/OM3-1.0	FC/UPC	OM3	MM	Aqua	1,0

- Other connector types available on request

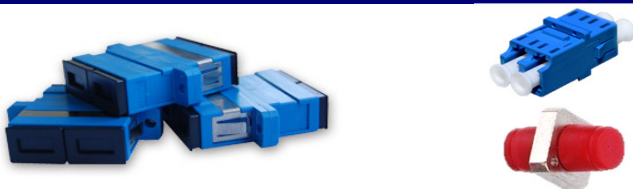
**Fiber pigtaills - OD 3.0mm/ high lenght/ INDUSTRIAL SERRIES**



Item code	Connector type	Fiber type	Mode	Cable colour	Lenght (m)
SC-P-5.0	SC/UPC	OS2	SM	Yellow	5,0
SC-P-10.0	SC/APC	OS2	SM	Yellow	10,0
SC-P-30.0	SC/UPC	OS2	SM	Yellow	30,0
SC/A-P-5.0	SC/APC	OS2	SM	Yellow	5,0
SC/A-P-10.0	SC/APC	OS2	SM	Yellow	10,0
SC/A-P-30.0	SC/APC	OS2	SM	Yellow	30,0
LC-P-5.0	LC/UPC	OS2	SM	Yellow	5,0
LC-P-10.0	LC/UPC	OS2	SM	Yellow	10,0
LC-P-30.0	LC/UPC	OS2	SM	Yellow	30,0

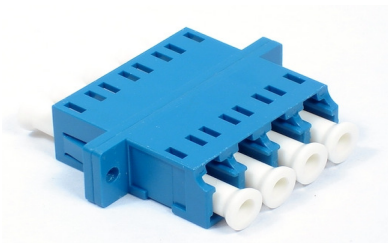
- Extra long pigtaills with DOUBLE jacket for mechanical resistance

**Fiber Adapters**



Item code	Connector type	Mode	Cable colour	Type
AD-SC/SC-DXM	SC/UPC - SC/UPC	MM	Brown	Duplex
AD-SC/SC-DXS	SC/UPC - SC/UPC	SM	Blue	Duplex
AD-SC/SC-SXM	SC/UPC - SC/UPC	MM	Brown	Simplex
AD-SC/SC-SXS	SC/UPC - SC/UPC	SM	Blue	Simplex
AD-SC/SC/A-DXS	SC/APC - SC/APC	SM	Blue	Duplex
AD-SC/SC/A-SXS	SC/APC - SC/APC	SM	Blue	Simplex
AD-LC/LC-DXS	LC/UPC - LC/UPC	SM	Blue	Duplex
AD-FC/FC-SXS	FC/UPC - FC/UPC	SM	Silver	Simplex
AD-FC/FC/A-SXS	FC/APC - FC/APC	SM	Silver	Simplex

**QUAD type LC adapter**



Item code	Connector type	Mode	Cable colour	Type
AD-LC/LC-4XS	SC/UPC - SC/UPC	SM	Brown	Duplex
AD-LC/LC-4XM	SC/UPC - SC/UPC	MM	Blue	Duplex

## MEDIA CONVERTERS



Item code	Connector type	Fiber type	Mode	Data transfer	Distance (km)
MCV-2060-SF/SM	SC	Single	SM	1.25G	60
MCV-2020-SF/SM	SC	Single	SM	1.25G	20
MCV-2060-DF/SM	SC	Dual	SM	1.25G	60
MCV-2020-DF/SM	SC	Dual	SM	1.25G	20
MCV-2001-DF/MM	SC	Dual	MM	1.25G	2
MCV-1060-SF/SM	SC	Single	SM	100M	60
MCV-1020-SF/SM	SC	Single	SM	100M	20
MCV-1060-DF/SM	SC	Dual	SM	100M	60
MCV-1020-DF/SM	SC	Dual	SM	100M	20
MCV-1002-DF/MM	SC	Dual	MM	100M	2
MCV-SFP-1000M	SFP	SFP	SM	1.25G	20

- Rack for media converters RMCV-14/2PS is convenient solution for power supply of media converters

## MEDIA CONVERTER FOR SFP MODULES 10/100/1000 Mbit

**NEW!**



Item code	Port	Mode	Data transfer
MCV-SFP-2020	SFP	SM/ MM	10/100/1000 Mbit

- Media converter with SFP port is compatible with all types of SFP modules displayed below and works in all data transfer range 10/100/1000 Mbit.

## SFP MODULES - CISCO switch compatible



Item code	Connector type	Fiber type	Mode	Data transfer	Distance (km)
SFP-2060-SF/SM-C	SC	Single	SM	1.25G	60
SFP-2020-SF/SM-C	SC	Single	SM	1.25G	20
SFP-2060-DF/SM-C	LC	Dual	SM	1.25G	60
SFP-2020-DF/SM-C	LC	Dual	SM	1.25G	20
SFP-2001-DF/MM-C	LC	Dual	MM	1.25G	0,55

- SFP modules are working with most of switches and it includes special CISCO switch protocol that allow communication between devices

## SFP MODULES - HP switch compatible

**NEW!**



Item code	Connector type	Fiber type	Mode	Data transfer	Distance (km)
SFP-2060-SF/SM-HP	SC	Single	SM	1.25G	60
SFP-2020-SF/SM-HP	SC	Single	SM	1.25G	20
SFP-2060-DF/SM-HP	LC	Dual	SM	1.25G	60
SFP-2020-DF/SM-HP	LC	Dual	SM	1.25G	20
SFP-2001-DF/MM-HP	LC	Dual	MM	1.25G	0,55

- SFP modules are working with most of switches and it includes special CISCO switch protocol that allow communication between devices

## SFP MODULES - Includes REMOTE MONITORING DDM

**NEW!**



Item code	Connector type	Fiber type	Mode	Data transfer	Distance (km)
SFP-2020-SF/SM-DDM	SC	Single	SM	1.25G	20
SFP-2020-DF/SM-DDM	LC	Dual	SM	1.25G	20

- Excellent solution for monitoring your network in REMOTE MODE by accessing control of SFP modules

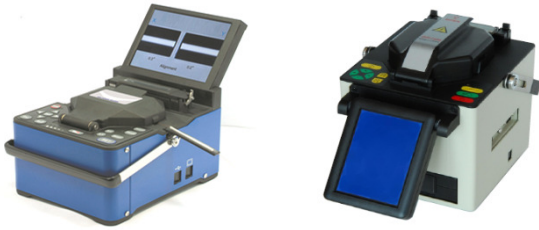
## 19" Rack for media converters with 2 power supply blocks



Item code	Description
RMCV-14/2PS	14 converter slots/ 2x220V power supply/ 4 coolers

- Compatible with media converters visible above

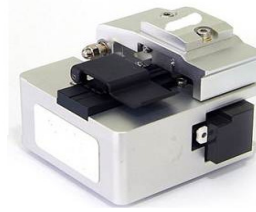
**Fiber cable fusion splicers**



Item code	Description
PB-910FC	Specification in <a href="http://www.electrobase.lv">www.electrobase.lv</a>
IB-720	Specification in <a href="http://www.electrobase.lv">www.electrobase.lv</a>
IB-730	Specification in <a href="http://www.electrobase.lv">www.electrobase.lv</a>

**90 degree Cleaver for fiber cutting - manual step action type**

**NEW!**



Item code	Description
FCL-M100	Compact 90 degree angle cleaver with stable operation by step-action process. Blade life time - 50'000 cuts.

**90 degree Cleaver for fiber cutting - fully automatic single step**

**NEW!**



Item code	Description
FCL-M900	Compact 90 degree angle cleaver with single action cleaving and fiber chip collection feature. Diamond blade, resource - 1 million cleavings.

**Fiber connector cleaning device**

**NEW!**



Item code	Description
PBC-8001	Fiber connector cleaning device. Suitable for any type of connectors - SC, LC, ST, FC and other.

**Replacement Cassete tape for Fiber connector cleaner**

**NEW!**



Item code	Description
PBC-8006	Replacement Cassete tape for Fiber connector cleaner

**Alchocol dispenser for fiber cleaning liquid**

**NEW!**



Item code	Description
39920	Alchocol dispenser for fiber cleaning liquid

**Fiber splice protecting tubes**



Item code	Description
FO-PTUB-61	Fiber splicing protecting tubes 61mm

**Fiber connector cleaning sticks**

**NEW!**



Item code	Description
FO-CLST-1.25	LC connector cleaning sticks - 1.25mm
FO-CLST-2.50	SC connector cleaning sticks - 2.50mm

### Fiber splice cassette with cover for 24 fibers



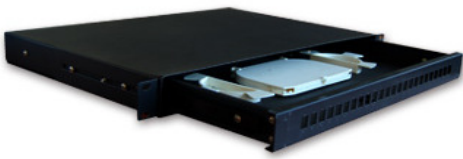
Item code	Description
FO-CAS/COV-24	Fiber splice cassette with cover for 24 fibers

### Fiber splitters



Item code	Description
FO-SPL-SC/1-2	SC/SC Fiber splitter 1-2/ Single Mode
FO-SPL-SC/1-4	SC/SC Fiber splitter 1-4/ Single Mode
FO-SPL-SC/1-8	SC/SC Fiber splitter 1-8/ Single Mode
FO-SPL-SC/AP1-2	SC/SC/APC Fiber splitter 1-2/ Single Mode
FO-SPL-SC/AP1-4	SC/SC/APC Fiber splitter 1-4/ Single Mode
FO-SPL-SC/AP1-8	SC/SC/APC Fiber splitter 1-8/ Single Mode

### Fiber optical patch panel/ 24 ports/ Telescopic



Item code	Description
FO-PPAN-24SX/T	24 ports/ simplex/ telescopic/ with cassette
FO-PPAN-24DX/T	24 ports/ duplex/ telescopic/ with cassette

### Fiber optical patch panel/ 72-144 ports/ Telescopic



Item code	Description
FO-PPAN-72SX/T	72 ports/ simplex/ telescopic
FO-PPAN-72DX/T	72 ports/ duplex/ telescopic

### Fiber optical patch panel/ 24 ports/ fixed type/ seperate front plate



**NEW!**

Item code	Description
FO-PPAN-24SX/FSP	24 ports/ simplex/ fixed/ without cassette
FO-PPAN-24DX/FSP	24 ports/ duplex/ fixed/ without cassette

### Fiber optical patch panel/ 24 ports/ telescopic/ seperate front plate



**NEW!**

Item code	Description
FO-PPAN-24SX/TSP	24 ports/ simplex/ telescopic/ without cassette
FO-PPAN-24DX/TSP	24 ports/ duplex/ telescopic/ without cassette

### Mechanical inline closure - 24-96F



Item code	Description	Fibers
FOH1-24F-M	Small size mechanical inline closure suitable for vertical and horizontal installations	24
FOH1-48F-M		48
FOH1-96F-M		96

- Size of closure (L\*H\*W) mm - 280x200x90
- Cable ports - 2
- Size of cable ports - each port support one cable with max diameter 14mm or two cables with max diameter 12mm
- Capacity of closure - 96 fibers (4 trays by 24F)
- Capacity of tray - 12-24fibers

### Inline closure - 24-96F



Item code	Description	Fibers
FOH2-24F-M	Horizontal inline closure suitable for regular floor and ceiling installations	24
FOH2-48F-M		48
FOH2-96F-M		96

- Size of closure (L\*H\*W) mm - 400x185x90
- Cable ports - 6
- Size of cable ports - 2 ports - each port for 1 cable with max 16 mm. 4 ports - each port for 1 cable with max 13 mm.
- Capacity of closure - 96 fibers (4 trays by 24F)
- Capacity of tray - 12-24fibers

### Inline closure - 96-192F



Item code	Description	Fibers
<b>FOH3-96F-M</b>	Horizontal inline closure suitable for trunk installations	96
<b>FOH3-144F-M</b>		144
<b>FOH3-192F-M</b>		192

- Size of closure (L\*H\*W) mm - 450x216x160
- Cable ports - 6
- Size of cable ports - 2 ports - each port for 1 cable with max 23 mm. 2 ports - each port for 1 cable with max 20 mm. 2 ports - each port for 1 cable with max 16 mm.
- Capacity of closure - 192 fibers (8 trays by 24F)
- Capacity of tray - 12-24fibers

### Vertical closure - Domo type 48-96F



Item code	Description	Fibers
<b>FOV2-48F-M</b>	Mechanical closure	48
<b>FOV2-96F-M</b>	Mechanical closure	96
<b>FOV2-48F-H</b>	Heat Shrinkable closure	48
<b>FOV2-96F-H</b>	Heat Shrinkable closure	96

- Vertical closure suitable for regular installations
- Size of closure (H\*W) mm - 435x190
- Cable ports - 4
- Size of cable ports - 1 port - oval port for loop cable with max 25 mm. 3 ports - each port for 1 cable with max 16 mm.
- Capacity of closure - 96 fibers (4 trays by 24F)
- Capacity of tray - 12-24 fibers

### High splice capacity vertical closure - Domo type 96-240F



Item code	Description	Fibers
<b>FOV4-96F-H</b>	Heat Shrinkable closure	96
<b>FOV4-144F-H</b>	Heat Shrinkable closure	144
<b>FOV4-240F-H</b>	Heat Shrinkable closure	240

- High splice capacity vertical closure for trunk installations
- Size of closure (H\*W) mm - 455x220
- Cable ports - 7
- Size of cable ports - 1 port - oval port for loop cable with max 36 mm. 6 ports - each port for 1 cable with max 21 mm.
- Capacity of closure - 240 fibers (10 trays by 24F)
- Capacity of tray - 12-24 fibers

### Small size vertical closure - Domo type 24-48F



Item code	Description	Fibers
<b>FOV1-24F-M</b>	Mechanical closure	24
<b>FOV1-48F-M</b>	Mechanical closure	48
<b>FOV1-24F-H</b>	Heat Shrinkable closure	24
<b>FOV1-48F-H</b>	Heat Shrinkable closure	48

- Small size vertical closure suitable for installations in limited space
- Size of closure (H\*W) mm - 288x178
- Cable ports - 4
- Size of cable ports - 1 port - oval port for loop cable with max 21 mm. 3 ports - each port for 1 cable with max 16 mm.
- Capacity of closure - 48 fibers (4 trays by 12F)
- Capacity of tray - 12 fibers

### Extra resistant vertical closure - Domo type 48-96F



Item code	Description	Fibers
<b>FOV3-48F-H</b>	Heat Shrinkable closure	48
<b>FOV3-96F-H</b>	Heat Shrinkable closure	96

- Extra resistant vertical closure suitable for installations in places of high damage risk
- Size of closure (H\*W) mm - 540x180
- Cable ports - 5
- Size of cable ports - 1 port - oval port for loop cable with max 25 mm. 4 ports - each port for 1 cable with max 16 mm.
- Capacity of closure - 96 fibers (4 trays by 24F)
- Capacity of tray - 12-24 fibers

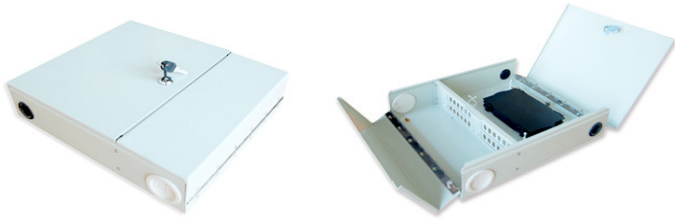
### High splice capacity vertical closure - Domo type 288-576F



Item code	Description	Fibers
<b>FOV5-288F-H</b>	Heat Shrinkable closure	288
<b>FOV5-432F-H</b>	Heat Shrinkable closure	432
<b>FOV5-576F-H</b>	Heat Shrinkable closure	576

- High splice capacity vertical closure for trunk installations
- Size of closure (H\*W) mm - 710x260
- Cable ports - 6
- Size of cable ports - 1 port - oval port for loop cable with max 25 mm. 5 ports - each port for 1 cable with max 32 mm.
- Capacity of closure - 576 fibers (8 trays by 96F)
- Capacity of tray - 96 fibers

**Steel termination box for 24 duplex splices**



Item code	Description	Fibers	
<b>TBX-1-24SX</b>	24 fiber termination box/ simplex	24	
<b>TBX-1-24DX</b>	24 fiber termination box/ duplex	24	
• Size of closure (L*H*W) mm - 350x300x80			

**Hermetic termination box for 16 splices**



Item code	Description	Fibers	
<b>TBX-2-16SX/H</b>	16 fiber termination box/ simplex	16	
<b>TBX-2-8SX/H</b>	8 fiber termination box/ simplex	8	
• Size of closure (L*H*W) mm - 300x240x80			

**Small size termination box for end user connection/ 4 splices**



Item code	Description	Fibers	
<b>TBX-3-4SX</b>	4 fiber termination box/ simplex	4	
• Size of closure (L*H*W) mm - 150x100x30			

**Termination box for 24 splices - vertical type**



Item code	Description	
<b>TBX-4-24F</b>	Vertical type termination box - 24 splices	